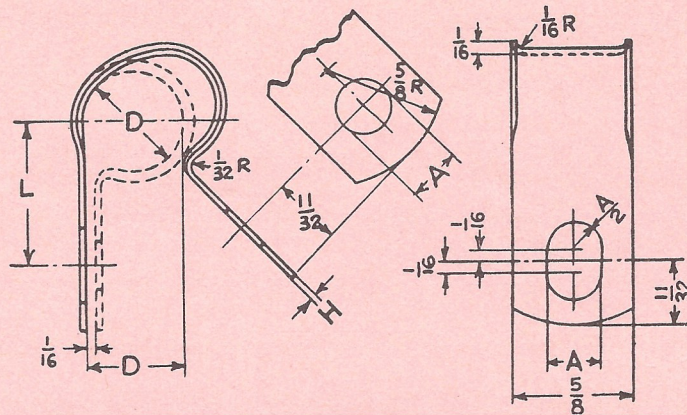


CABLE AND PIPE CLIPS



DIMENSIONAL DATA

D	NOMINAL DIAMETER	1/8	3/16	1/4	5/16	3/8	7/16	1/2	5/8	3/4	7/8	1	1 1/8	1 1/4	1 3/8	1 1/2	1 3/4	2
L	CENTRES	9/16	19/32	5/8	21/32	11/16	23/32	3/4	13/16	7/8	15/16	1	1 1/16	1 1/8	1 3/16	1 1/4	1 3/8	1 1/2
H	THICKNESS	S.W.G.	23	23	23	23	23	23	20	20	20	20	20	20	20	20	20	20
		inches	.024	.024	.024	.024	.024	.024	.024	.036	.036	.036	.036	.036	.036	.036	.036	.036

CODE OF PART NUMBERS

NOMINAL DIAMETER	DIAMETER OF HOLE 'A'				
	5/32	7/32	9/32	1 1/32	1 3/32
1/8	PCR0205	PCR0207	PCR0209	PCR0211	PCR0213
3/16	PCR0305	PCR0307	PCR0309	PCR0311	PCR0313
1/4	PCR0405	PCR0407	PCR0409	PCR0411	PCR0413
5/16	PCR0505	PCR0507	PCR0509	PCR0511	PCR0513
3/8	PCR0605	PCR0607	PCR0609	PCR0611	PCR0613
7/16	PCR0705	PCR0707	PCR0709	PCR0711	PCR0713
1/2	PCR0805	PCR0807	PCR0809	PCR0811	PCR0813
5/8	PCR1005	PCR1007	PCR1009	PCR1011	PCR1013
3/4	PCR1205	PCR1207	PCR1209	PCR1211	PCR1213
7/8	PCR1405	PCR1407	PCR1409	PCR1411	PCR1413
1	PCR1605	PCR1607	PCR1609	PCR1611	PCR1613
1 1/8	PCR1805	PCR1807	PCR1809	PCR1811	PCR1813
1 1/4	PCR2005	PCR2007	PCR2009	PCR2011	PCR2013
1 3/8	PCR2205	PCR2207	PCR2209	PCR2211	PCR2213
1 1/2	PCR2405	PCR2407	PCR2409	PCR2411	PCR2413
1 3/4	PCR2805	PCR2807	PCR2809	PCR2811	PCR2813
2	PCR3205	PCR3207	PCR3209	PCR3211	PCR3213

ALL DIMENSIONS ARE IN INCHES

1. MATERIAL. Cable and pipe clips shall be manufactured from steels equivalent to Specification En.2 of B.S.1449, cold-rolled, dead soft.

2. DIMENSIONS. All pipe clips shall comply with the dimensions as tabled above.

3. FINISH. All clips shall be zinc-plated to B.S.1706/B.

4. Clips must be cleanly finished, sound, and free from defects, burrs, and sharp edges.

5. Non-compliance with any factor given or indicated on this sheet shall be deemed sufficient cause for rejection.

These Standards were developed without considering whether patents may or may not be involved. In all cases, therefore, the supplier shall be required to assume patent liability.