

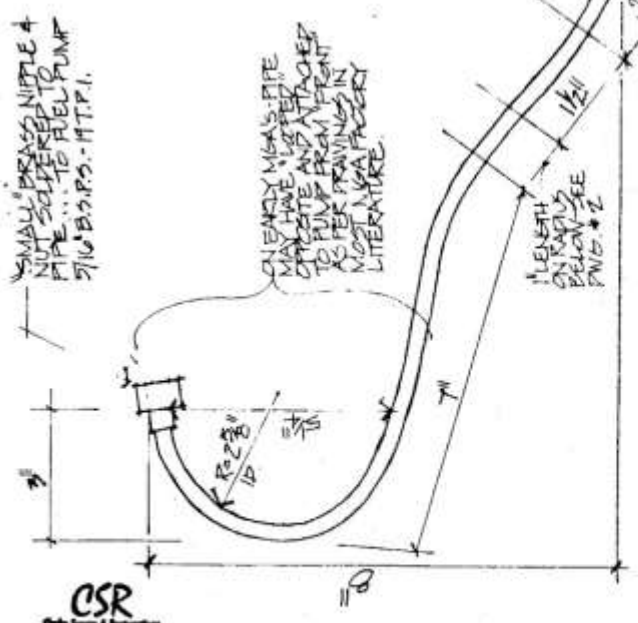
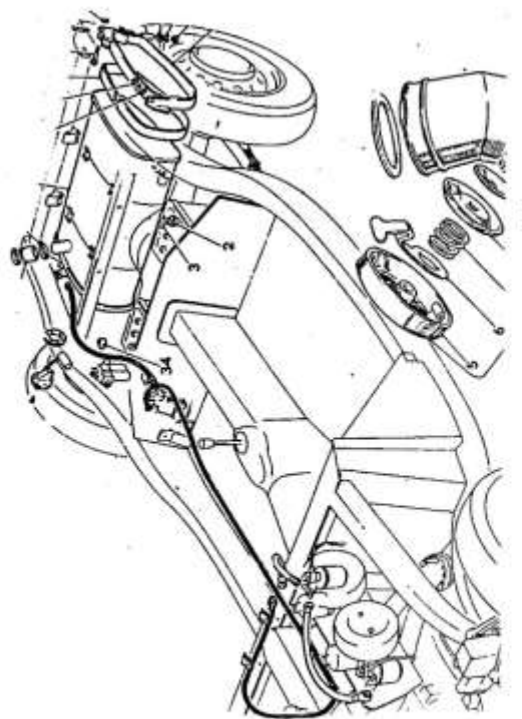
VIEW FROM SIDE (PWS #1)

MGA FUEL PIPE - PUMP TO FLEXIBLE HOSE THIS PARTING MATERIAL: 3/16\"/>

EMC. PART NO. # M12-STEEL

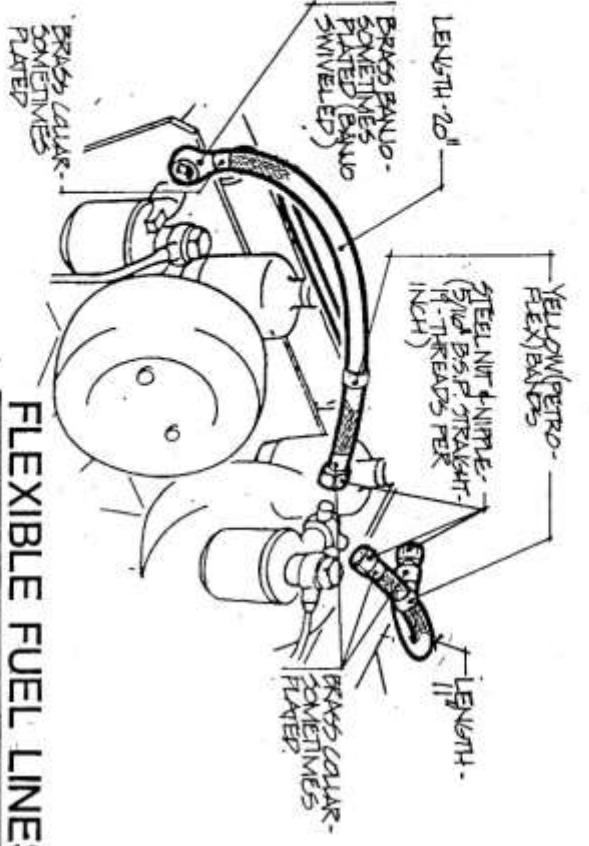
(CSR PART NO. # M12-STEEL)

ALL DIMENSIONS ARE 1/8\"/>

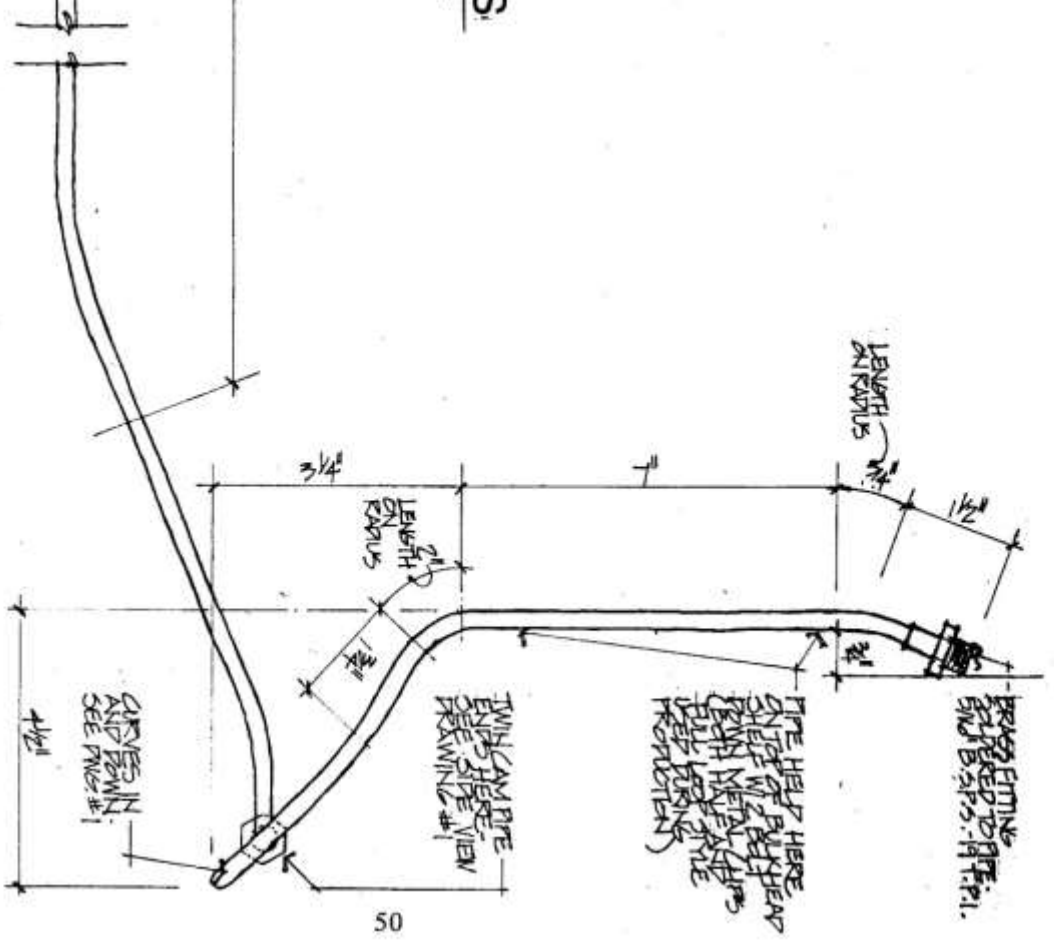
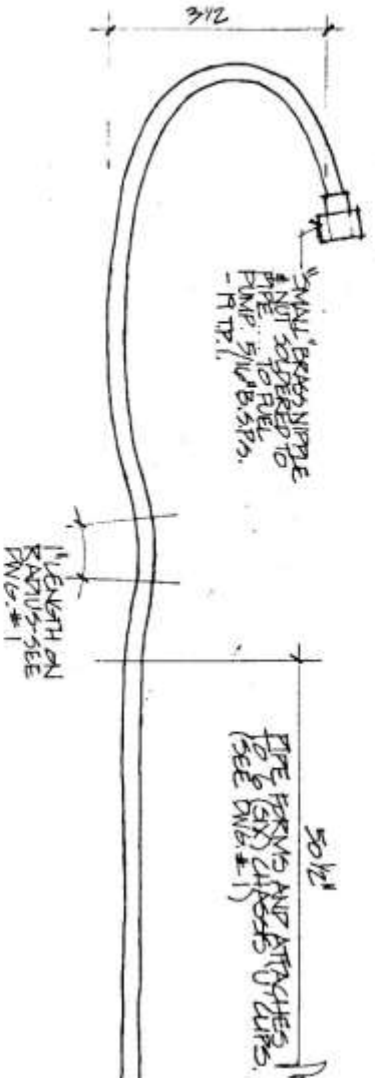


# FRONT FUEL PIPE





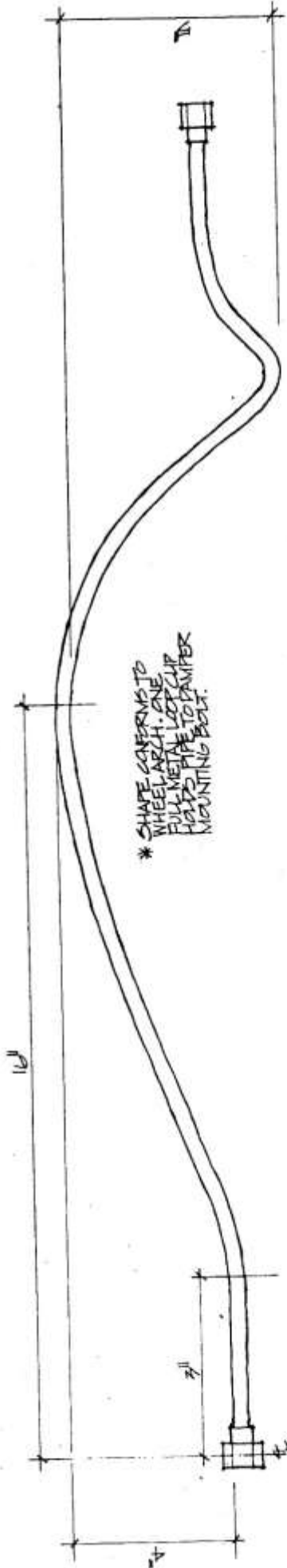
**FLEXIBLE FUEL LINES.**  
RUBBER HOSE REINFORCED W/ METAL MESH - APPROX. 1/2\"/>



**VIEW FROM TOP**  
W/ A FUEL PIPE - PUMP TO FLEXIBLE HOSE - SEE DRAWING #1 FOR ADDITIONAL INFO.  
ALL DIMENSIONS ARE +/- .05\"/>

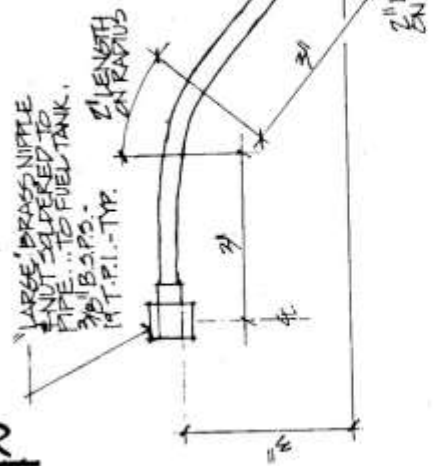
**FRONT FUEL PIPE**



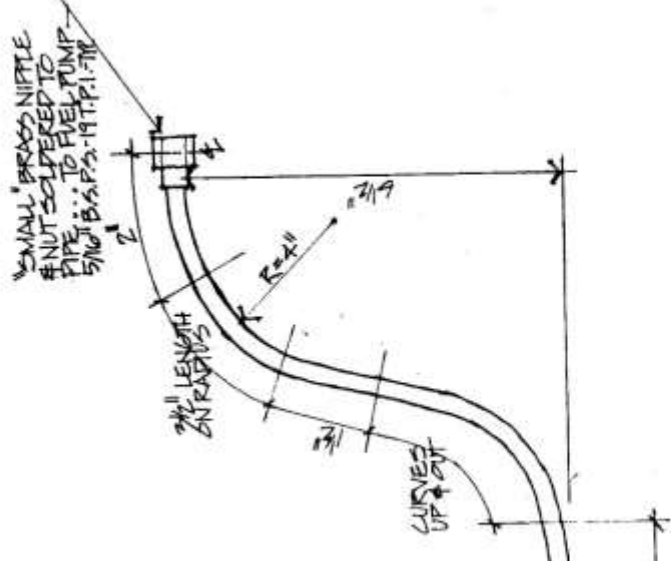


VIEW FROM SIDE (DWG.#4)

REAR FUEL PIPE - TANK TO PUMP  
 MATERIAL - ORIGINAL CARBON STEEL - MILD -  
 WELDED TYPE (BUNDY TUBING. 2 1/2" OD - 0.05" WALL  
 BNC. PART NO. PUSH ROD # TWIN CAM  
 # PART 5220 LENGTH 34 1/2"  
 (COR PART NO. # N51 - STAINLESS STEEL)  
 ALL DIMENSIONS ARE +/- .001"



VIEW FROM TOP (DWG.#5)  
 7/95 CR/TAC



# REAR FUEL PIPE

